



GALAXY

CONTENTS

<i>2302 WRAS Wafer Series Butterfly Valve</i>	<i>1</i>
<i>2502 WRAS Lugged Series Butterfly Valve</i>	<i>2</i>
<i>3243 WRAS BS NRS Resilient Seated Gate Valve</i>	<i>3</i>
<i>3233 WRAS BS OS&Y Resilient Seated Gate Valve</i>	<i>4</i>
<i>5306 WRAS DIN Wafer Double Door Non Return Valve</i>	<i>5</i>
<i>7101 WRAS Y-Pattern Strainer</i>	<i>6</i>
<i>1209-DFM WRAS Fix Orifice Double Regulating Valve</i>	<i>7</i>
<i>1209-BT/1209-BTM WRAS Bronze Fix Orifice Double Regulating Valve</i>	<i>8</i>
<i>1251 WRAS Bronze Ball Valve</i>	<i>9</i>
<i>3152 WRAS Bronze Gate Valve</i>	<i>10</i>
<i>5451 WRAS Bronze Swing Check Valve</i>	<i>11</i>
<i>7654 WRAS Bronze Y-Pattern Strainer</i>	<i>12</i>
<i>1520 WRAS Bronze Pressure Reducing Valve</i>	<i>13</i>

WRAS Wafer Series Butterfly Valve

Fig. 2302

Features

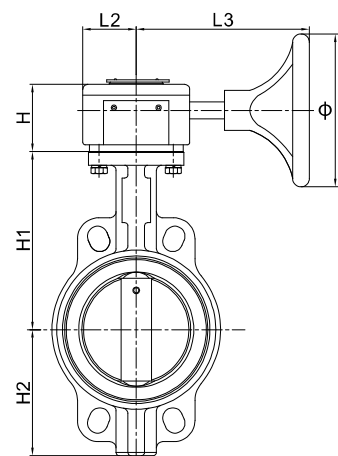
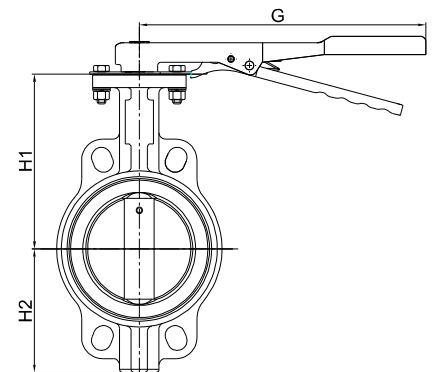
WRAS approved, available in potable water system
 Robust ductile iron valve body ensure long service life
 Pinned single shaft make most reliable alignment with disc

Design Specification

Face to Face Standard	ISO 5752 20 Series
Flange Connection	BS EN 1092-2 PN16/PN25 ASME Class125/Class150/Class300 JIS 5K/10K/16K
Working Pressure	16/25 bar
Testing Pressure	Shell Test: 24/37.5 bar Seat Test: 17.6/27.5 bar
Working Temperature	-10 deg C to +80 deg C EPDM
Suitable Media	Potable Water

Material Specification

Part	Material	Specification
Body	Ductile Iron	EN-JS 1050
	Ductile Iron+ENP	EN-JS 1050
Disc	Ductile Iron+WRAS Epoxy	EN-JS 1050
	Stainless Steel	BS970 316C16
Shaft	Stainless Steel 410(2"-14")	BS970 410S21
	Stainless Steel 431(16"-24")	BS970 431S29
Seat	WRAS EPDM	
O-Ring	WRAS EPDM	
Pin	Stainless Steel	BS970 316S11



Dimensions

DN	mm	50	65	80	100	125	150	200	250	300	350	400	450	500	600	
	inch	2"	2-1/2"	3"	4"	5"	6"	8"	10"	12"	14"	16"	18"	20"	24"	
H1		141	150	156	168	187	206	231	270	328	368	400	422	480	562	
H2		68.6	76	99	119	129	142	176	209	249	272	342	364	389	459	
Face to Face		42	44.5	44.5	51	54.5	54.5	59.6	67	75.5	75.5	102	114	130	151	
Lever	G (Lever)	195	195	195	266	266	328	386	386	386	-	-	-	-	-	
Gear Box	H	70	70	70	70	70	70	80	80	80	80	99	99	150	150	
	L2	52	52	52	52	52	52	75	75	80	80	125	125	130	130	
	L3	150	150	150	150	150	150	208	208	212	212	275	275	350	350	
	Φ	150	150	150	150	150	150	280	280	280	280	400	400	400	400	
Rate		24:1						30:1			50:1		80:1		293.5:1	

Subject to change without prior notice due to products optimization.

WRAS Lugged Series Butterfly Valve

Fig. 2502

Features

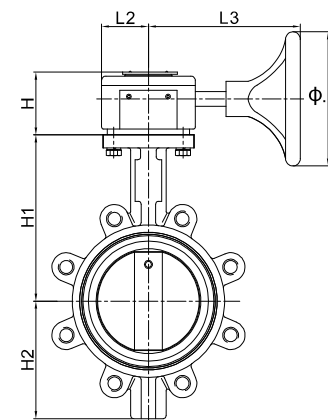
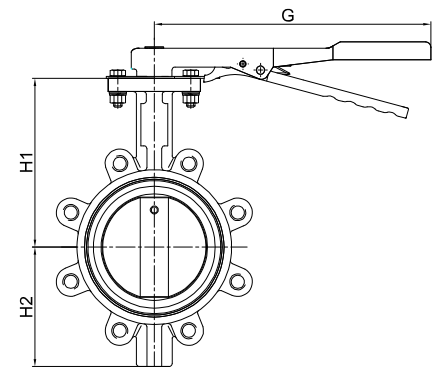
WRAS approved, available in potable water system
 Robust ductile iron valve body ensure long service life
 Pinned single shaft make most reliable alignment with disc

Design Specification

Face to Face Standard	ISO 5752 20 Series
Flange Connection	BS EN 1092-2 PN16/PN25 ASME Class125/Class150/Class300 JIS 5K/10K/16K
Working Pressure	16/25 bar
Testing Pressure	Shell Test: 24/37.5 bar Seat Test: 17.6/27.5 bar
Working Temperature	-10 deg C to +85 deg C EPDM
Suitable Media	Potable Water

Material Specification

Part	Material	Specification
Body	Ductile Iron	EN-JS 1050
	Ductile Iron+ENP	EN-JS 1050
Disc	Ductile Iron+WRAS Epoxy	EN-JS 1050
	Stainless Steel	BS970 316C16
Shaft	Stainless Steel 410(2"-14")	BS970 410S21
	Stainless Steel 431(16"-24")	BS970 431S29
Seat	WRAS EPDM	
O-Ring	WRAS EPDM	
Pin	Stainless Steel	BS970 316S11



Dimensions

DN	mm	50	65	80	100	125	150	200	250	300	350	400	450	500	600	
	inch	2"	2-1/2"	3"	4"	5"	6"	8"	10"	12"	14"	16"	18"	20"	24"	
H1		141	150	156	168	187	206	231	270	328	368	400	422	480	562	
H2		68.6	76	99	119	129	142	176	209	249	272	342	364	389	459	
Face to Face		42	44.5	44.5	51	54.5	54.5	59.6	67	75.5	75.5	102	114	130	151	
Lever	G (Lever)	195	195	195	266	266	328	386	386	386	-	-	-	-	-	
	H	70	70	70	70	70	70	80	80	80	80	99	99	150	150	
Gear Box	L2	52	52	52	52	52	52	75	75	80	80	125	125	130	130	
	L3	150	150	150	150	150	150	208	208	212	212	275	275	350	350	
	phi	150	150	150	150	150	150	280	280	280	280	400	400	400	400	
Rate		24:1						30:1			50:1		80:1		293.5:1	

Subject to change without prior notice due to products optimization.

WRAS BS NRS Resilient Seated Gate Valve

Fig. 3243

Features

- WRAS approved, available in potable water system
- Non-rising stem, inside screw
- Bolted bonnet
- Resilient seat for pipeline isolation
- Hand wheel or wrench nut operation

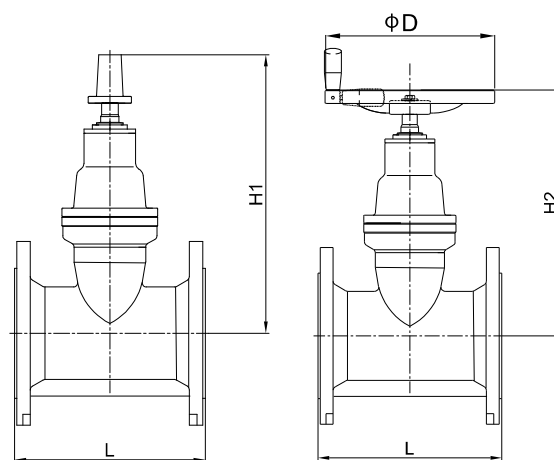
Design Specification

Face to Face Standard	BS 5163
Flange Connection	BS EN 1092-2 PN16/PN25 ASME Class125/Class150/Class300 JIS 5K/10K/16K
Working Pressure	16/25 bar
Testing Pressure	Shell Test: 24/37.5 bar Seat Test: 17.6/27.5 bar
Working Temperature	-10 deg C to +85 deg C EPDM
Suitable Media	Potable Water



Material Specification

Part	Material	Specification
Body	Ductile Iron	EN-JS1050
Bonnet	Ductile Iron	EN-JS1050
Disc	Ductile Iron+ WRAS EPDM	EN-JS1050+WRAS EPDM
Stem	Stainless Steel	BS970 420S37
Stem Nut	Bronze	-
Sealing	WRAS EPDM	-
Wrench Nut	Ductile Iron	EN-JS1050
Hand Wheel	Ductile Iron	EN-JS1050



Dimensions

DN	mm	50	65	80	100	125	150	200	250	300	350	400	450	500	600
	inch	2"	2-1/2"	3"	4"	5"	6"	8"	10"	12"	14"	16"	18"	20"	24"
L		178	190	203	229	254	267	292	330	356	381	406	432	457	528
H1		235	261	301	334	388	437	521	622	699	862	938	1058	1142	1295
H2		203	230	276	311	364	413	503	615	692	842	931	1058	1146	1298
φD		160	160	200	200	250	250	280	370	370	508	158	610	610	762

WRAS BS OS&Y Resilient Seated Gate Valve

Fig. 3233

Features

- WRAS approved, available in potable water system
- Rising stem, outside screw and yolk
- Bolted bonnet
- Resilient seat for pipeline isolation
- Hand wheel operation

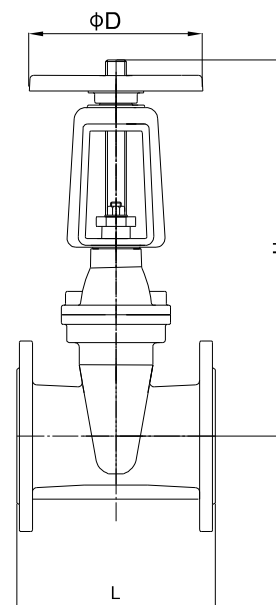
Design Specification

Face to Face Standard	BS 5163
Flange Connection	BS EN 1092-2 PN16/25 ASME Class125/Class150/Class300 JIS 5K/10K/16K
Working Pressure	16/25 bar
Testing Pressure	Shell Test: 24/37.5 bar Seat Test: 17.6/27.5 bar
Working Temperature	-10 deg C to +85 deg C EPDM
Suitable Media	Potable Water



Material Specification

Part	Material	Specification
Body	Ductile Iron	EN-JS1050
Bonnet	Ductile Iron	EN-JS1050
Disc	Ductile Iron+ WRAS EPDM	EN-JS1050+WRAS EPDM
Stem	Stainless Steel	BS970 420S37
Stem Nut	Bronze	-
Sealing	WRAS EPDM	-
Hand Wheel	Ductile Iron	EN-JS1050



Dimensions

DN	mm	50	65	80	100	125	150	200	250	300	350	400	450	500	600
	inch	2"	2-1/2"	3"	4"	5"	6"	8"	10"	12"	14"	16"	18"	20"	24"
L		178	190	203	229	254	267	292	330	356	381	406	432	457	528
H		260	301	354	401	482	558	703	846	972	817	898	1009	1102	1283
ΦD		160	160	200	200	250	250	280	370	370	508	158	610	610	762

WRAS DIN Wafer Double Door Non Return Valve

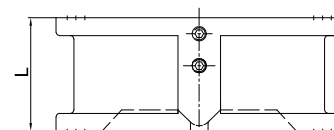
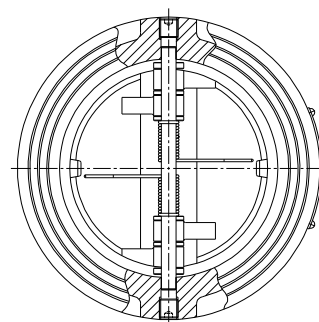
Fig. 5306

Features

WRAS approved, available in potable water system
Spring loaded dual plate pattern

Design Specification

Face to Face Standard	DIN 3202 K3
Flange Connection	BS EN 1092-2 PN16/PN25 ASME Class125/Class150/Class300 JIS 5K/10K/16K
Working Pressure	16/25 bar
Testing Pressure	Shell Test: 24/37.5 bar Seat Test: 17.6/27.5 bar
Working Temperature	-10 deg C to +85 deg C EPDM
Suitable Media	Potable Water



Material Specification

Part	Material	Specification
Body	Ductile Iron	EN-JS 1050
Seat	WRAS EPDM	--
Disc	Ductile Iron	EN-JS 1050
	Stainless Steel 304	BS970 304C15
Shaft	Stainless Steel 316	BS970 316C16
	Stainless Steel	BS970 316S11
Spring	Stainless Steel	BS970 316S11
Gasket	Bronze	B62 C83600
Set Screw	Stainless Steel	BS970 304S15

Dimensions

DN	mm	50	65	80	100	125	150	200	250	300	350	400	450	500	600
	inch	2"	2-1/2"	3"	4"	5"	6"	8"	10"	12"	14"	16"	18"	20"	24"
L		43	46	64	64	70	76	89	114	114	127	140	152	152	178

WRAS Y-Pattern Strainer

Fig.7101

Features

- WRAS approved, available in potable water system
- Filter debris carried by the fluid in pipeline
- Stainless steel perforated screen inside valve body
- Test point plug can be produced according to client's demand

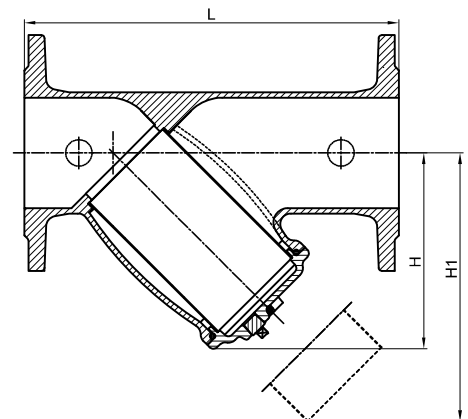


Design Specification

Face to Face Standard	EN 558-1
Flange Connection	BS EN 1092-2 PN16/PN25 ASME Class125/Class150/Class300 JIS 5K/10K/16K
Working Pressure	16/25 bar
Testing Pressure	Shell Test: 24/37.5 bar Seat Test: 17.6/27.5 bar
Working Temperature	-10 deg C to +85 deg C EPDM
Suitable Media	Potable Water

Material Specification

Part	Material	Specification
Body	Ductile Iron	EN-JS1050
Cover	Ductile Iron	EN-JS1050
Screen	Stainless Steel	BS970 304S15
Sealing	WRAS EPDM	-



Dimensions

DN	50	65	80	100	125	150	200	250	300	350	400	450	500	600
Inch	2"	2-1/2"	3"	4"	5"	6"	8"	10"	12"	14"	16"	18"	20"	24"
L	230	290	310	350	400	480	600	730	850	980	1100	1200	1250	1450
H	110	135	155	190	255	290	335	428	470	625	685	746	845	984
H1	165	205	230	295	350	400	510	665	745	940	1230	1110	1550	1560

WRAS Fixed Orifice Double Regulating Valve

Fig.1209-DFM

Features

Single unit Y-pattern globe valves incorporating an integral orifice plate to form a fixed orifice flow measurement unit with regulation and isolation capacity. Valves conform to requirements of BS7350.

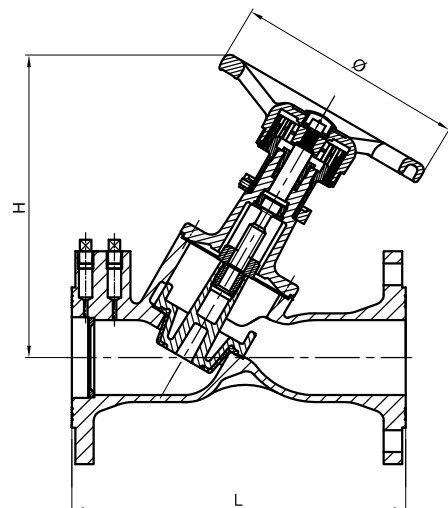
Design Specification

Working Pressure	25 bar
Flange Connection	BS EN 1092-2 PN25
Testing Pressure	Shell Test: 37.5 bar Seat Test: 27.5 bar
Working Temperature	-10 °C to +85 °C
Suitable Media	Potable Water



Material Specification

Part	Material	Specification
Body	Ductile Iron	QT450-10
Disc	Ductile Iron	QT450-10+EPDM
Stem Nut	Brass	EN 12165 CW617N
Stem	Stainless Steel	AISI 410
Cover	Ductile Iron	QT450-10
Hand Wheel	Ductile Iron	QT450-10
Orifice Insert	Brass	EN 12165 CW617N
Gland	Brass	EN 12165 CW617N



Dimensions

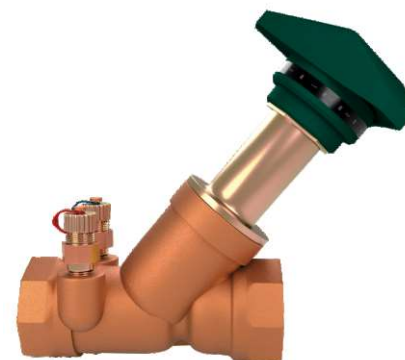
DN	65	80	100	125	150	200	250	300
Inch	2-1/2"	3"	4"	5"	6"	8"	10"	12"
L	290	310	350	400	480	600	730	850
H	263	268	300	328	340	525	572	686
Ø	200	200	240	290	290	350	420	420

WRAS Bronze Fixed Orifice Double Regulating Valve

Fig. 1209-BT

Features

Y-pattern globe valves having characterised throttling disk tending towards equal percentage performance. Integral square edged entrance orifice plate and insertion test points fitted. Double regulating feature allow valve opening to be set with an Allen key. Operation of the valve is by means of the Microset hand wheel.

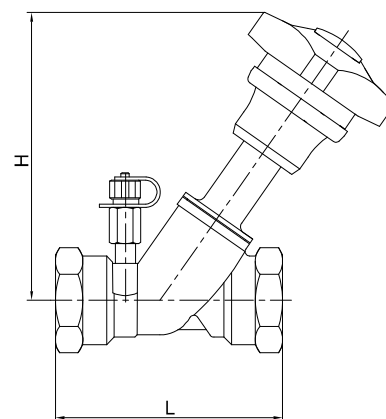


Design Specification

End Connection	Threaded to BS 2779 (ISO7)——1/2"-3/4"
	Threaded to BS10226(ISO7)——1"-2"
	Also available threaded to ANSI B1.20.1 Adaptor kits for use with copper tube also available
Working Pressure	25 bar (-10 deg C to 100 deg C)
	23.4 bar (110 deg C)
	21.8 bar (120 deg C)

Material Specification

Part Name	Material	Specification
Body	Bronze (Gunmetal)	1982 CC491K
Stem	Brass	12165 CW602N
Orifice Plate	Brass	12165 CW602N
Disc	Brass (1/2"-3/4")	12165 CW602N
	Brass+PTFE (1"-2")	12165 CW602N
Bonnet	Brass (1/2"-1 1/4")	12165 CW602N
	Bronze (1 1/2"-2")	1982 CC491K
Hand Wheel	PA	



Dimensions

DN	mm	15	20	25	32	40	50
	inch	1/2"	3/4"	1"	1-1/4"	1-1/2"	2"
L		87	96	100	114	125	146
H		113	114	135	136	151	152
Flow KV		1.72	2.97	4.75	10.25	16.83	27.26
Kvs		2.20	4.60	8.50	16.70	26.10	43.20

WRAS Bronze Ball Valve

Fig. 1251

Features

- Screwed Body Cap (Full Bore)
- Blow-out Proof Stem

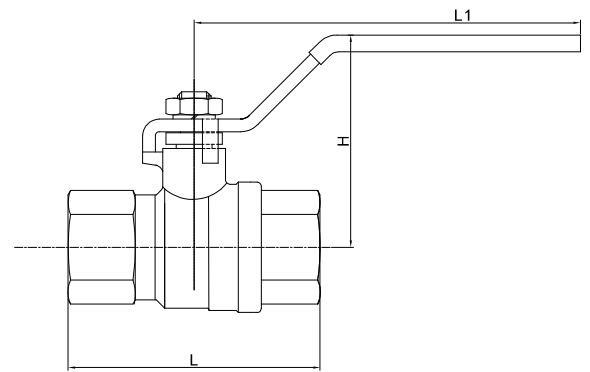


Design Specification

Valve Standard	MSS-SP 110
Thread Standard	NPT/BSPT
Working Pressure	25 bar
Testing Pressure	Shell Test: 30 bar Hydrostatic Seat Test: 22bar Hydrostatic

Material Specification

Part Name	Material	Specification
Body	Bronze (Gunmetal)	1982 CC491K
Stem	Brass	12164 CW614N
Ball	Brass	12164 CW614N
Seat	PTFE	
Packing	PTFE	
Gland Nut	Brass	12164 CW614N
Lever	Mild Steel+PVC Cover	



Dimensions

DN	mm	8	10	15	20	25	32	40	50	65	80	100
	inch	1/4"	3/8"	1/2"	3/4"	1"	1-1/4"	1-1/2"	2"	2-1/2"	3"	4"
L		46	46	53	61	71	85	92	114	134	152	182
H		39	39	44	51	55	65	70	83	118	132	150
D		81	81	95	110	110	140	140	160	220	270	280

WRAS Bronze Gate Valve

Fig. 3152

Features

- Screwed-In bonnet (Solid Wedge Disc)
- Non-Rising Stem (Integral Seat & Asbestos Free)

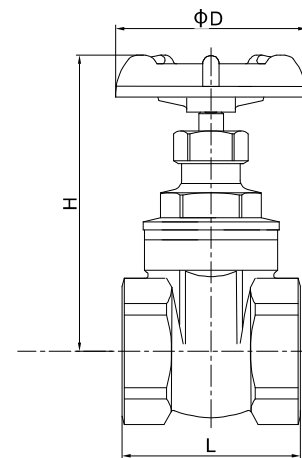


Design Specification

Valve Standard	MSS-SP 80
Thread Standard	NPT/BSPT
Working Pressure	20 bar
Testing Pressure	Shell Test: 30 bar Hydrostatic Seat Test: 22bar Hydrostatic

Material Specification

Part Name	Material	Specification
Body	Bronze (Gunmetal)	1982 CC491K
Bonnet	Bronze (Gunmetal)	1982 CC491K
Disc	Bronze (Gunmetal)	1982 CC491K
Stem	Brass	12164 CW602N
Packing	NBR	
Packing Nut	Brass	12164 CW614N
Hand Wheel	Aluminum(1 1/2"-2 1/2") Cast Iron (3"-4")	



Dimensions

DN	mm	15	20	25	32	40	50	65	80	100
	inch	1/2"	3/4"	1"	1-1/4"	1-1/2"	2"	2-1/2"	3"	4"
L		43	49	54	62	65	75	87	105	124
H		78	88	103	116	133	156	190	215	258
ΦD		52	60	65	70	78	92	100	110	130

WRAS Bronze Swing Check Valve

Fig. 5451

Features

- Screwed Cap
- Swing Type Disc (Integral Seat)

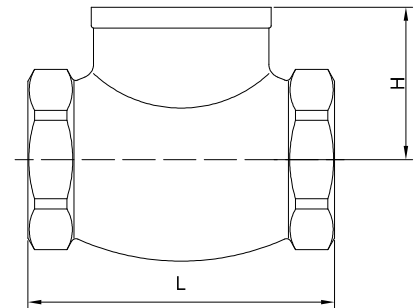
Design Specification

Valve Standard	MSS-SP 80
Thread Standard	NPT/BSPT
Working Pressure	20 bar
Testing Pressure	Shell Test: 30 bar Hydrostatic Seat Test: 22bar Hydrostatic



Material Specification

Part Name	Material	Specification
Body	Bronze (Gunmetal)	1982 CC491K
Cap	Bronze (Gunmetal)	1982 CC491K
Disc Holder	Bronze (Gunmetal)	1982 CC491K
Disc	NBR	
Hinge	Bronze	1982 CC491K
Hinge Pin	Stainless Steel	1449 304S31



Dimensions

DN	mm	15	20	25	32	40	50	65	80	100
	inch	1/2"	3/4"	1"	1-1/4"	1-1/2"	2"	2-1/2"	3"	4"
L		58	66	76	88	96	112	136	147	180
H		37	43	49	58	63	72	85	93	110

WRAS Bronze Y-Pattern Strainer

Fig. 7654

Features

Y-Pattern Body (Screwed Cap)
Stainless Steel 304 Screen (Asbestos Free)

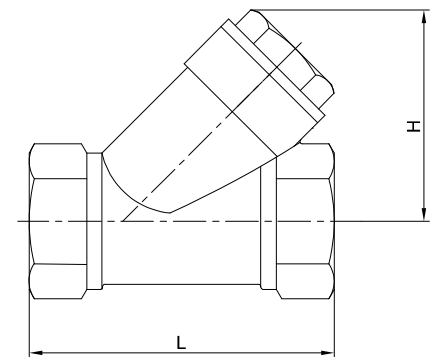
Design Specification

Thread Standard	NPT/BSPT
Working Pressure	20 bar
Testing Pressure	Shell Test: 30 bar Hydrostatic Seat Test: 22bar Hydrostatic



Material Specification

Part Name	Material	Specification
Body	Bronze (Gunmetal)	1982 CC491K
Cap	Bronze (Gunmetal)	1982 CC491K
Screen	Stainless Steel 304	1449 304S31
Gasket	Not-Asbestos	



Screen Specification

Size		Hole Diameter		Free Flow Area
mm	inch	mm	inch	square inch
DN15-DN80	1/2"-3"	1.4*1.2	0.06*0.05	225

Dimensions

DN	mm	15	20	25	32	40	50	65	80
	inch	1/2"	3/4"	1"	1-1/4"	1-1/2"	2"	2-1/2"	3"
L		58	70	88	96	107	126	230	260
H		40	51	58	69	74	95	110	142

WRAS Bronze Pressure Reducing Valve Fig. 1520

Features

- WRAS approved, available in potable water system
- Quick reaction
- Long service life

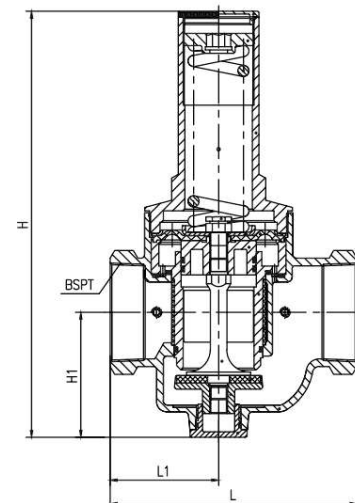


Design Specification

End Connection	ISO 7 or ISO 228
Working Pressure	PN20
Outlet Pressure	0.1 to 0.4 Mpa
Working Temperature	≤ 70 deg C
Suitable Media	Water, Gas

Material Specification

Part Name	Material	Specification
Body	Bronze (Gunmetal)	1982 CC491K
Disc	Brass	12165 CW617N
Gasket	NBR	
Core	Brass	12165 CW617N
Core Seat	Brass	12165 CW617N
Mesh	Stainless Steel	AISI 304
Bonnet	Bronze (Gunmetal)	982 CC491K
O-Ring	NBR	



Dimensions and Weight

DN	mm	15	20	25	32	40	50	65	80	100
	inch	1/2"	3/4"	1"	1-1/4"	1-1/2"	2"	2-1/2"	3"	4"
L		89	92	98	126	126	168	174	225	230
H		121	121	121	192	192	272	272	385	385
L1		41.5	43	46	55.5	55.5	72	75.5	98.5	104.5
H1		46	46	46	62	62	85	85	113	113

GALAXY



Tianjin Galaxy Valve Co., Ltd

*No.49, Guanghui Road, Beizhakou Town,
Jinnan District,
Tianjin, China*

+86 22 2875 0815

*www.galaxyvalves.com
info@galaxyvalves.com*